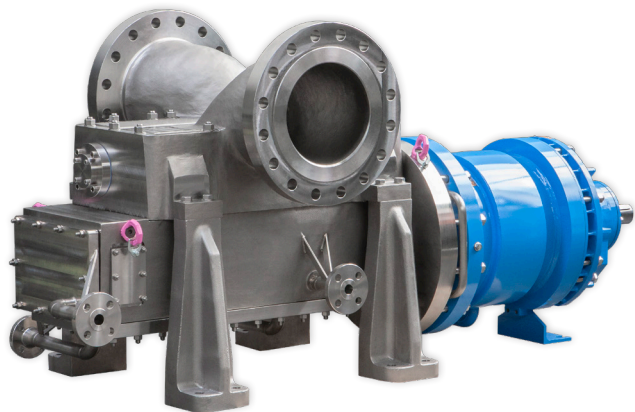


# SINGLE VOLUTE TWIN SCREW PUMP WITH MAGNETIC DRIVE

ACC. DIN EN ISO / API



## SERIES SLM DSP-2C

ACCORDING API 676

### MAX. FLOW RATE:

1.800 M<sup>3</sup>/H  
7,925 USGPM

### TEMPERATURE RANGE:

-120 °C to +350 °C  
-184 °F to +662 °F

### MAX. DIFF. PRESSURE:

40 BAR  
580 PSI

### MAX. PRESSURE RATING:

PN 400  
5,802 PSI

## DESIGN

- ▶ Single volute twin screw pump, process or tank farm design
- ▶ Design based on API 676 and DIN EN ISO 14847
- ▶ Axial split modular casing (larger sizes with radial split casings)
- ▶ Centerline mounting (OH2)
- ▶ Permanent & synchronous magnetic drive
  - Maintenance-free
  - Separation of liquid chamber and atmosphere by means of containment shell
- ▶ Pressurized partial flush flow (cooling of eddy current losses)
- ▶ Materials: steel, stainless steel, duplex steel, nickel-based materials, titanium
- ▶ Bearing bracket with anti-friction bearings, oil-lubricated or greased-for-life
- ▶ Spare parts of magnetic coupling and bearing brackets are interchangeable with centrifugal pump series
- ▶ Close-coupled design (SLM DSP-2CB)

MANY  
OPTIONS  
AVAILABLE

## PUMPING OF

- ▶ Aggressive, explosive, toxic, hot and malodorous liquids
- ▶ Bitumen
- ▶ Bitumen / asphalt
- ▶ Dyes and paints
- ▶ Fuel oils
- ▶ Heat transfer liquids
- ▶ High-viscosity liquids
- ▶ Hydrocarbons
- ▶ Lube, crude or fuel oils
- ▶ Molten sulfur
- ▶ Polymers
- ▶ Residues
- ▶ Resins
- ▶ Solvents
- ▶ Valuable liquids
- ▶ And many more

