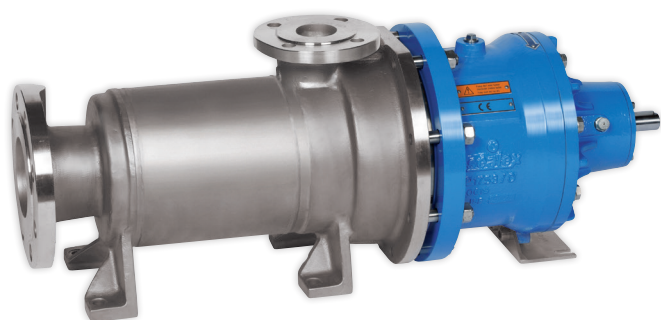


# MULTI-STAGE SIDE CHANNEL PUMP WITH MAGNETIC DRIVE

ACC. DIN EN ISO



## SERIES SLM SV

FOLLOWING DIN EN ISO 15783

### MAX. FLOW RATE:

42 M<sup>3</sup>/H  
185 USGPM

### TEMPERATURE RANGE:

-120 °C to +250 °C  
-184 °F to +482 °F

### MAX. DELIVERY HEAD:

470 M L.C.  
1,542 FT

### MAX. PRESSURE RATING:

PN 400  
5,802 PSI

## DESIGN

- ▶ Horizontal side channel pump, process design
- ▶ Magnetic drive based on DIN EN ISO 15783
- ▶ Maximum number of stages: 8
- ▶ Vanes made of duplex, with DLC coating
- ▶ Self-priming
- ▶ Barrel casing (just only two gaskets for sealing)
- ▶ For handling of gas loaded liquids
- ▶ Low-NPSH first stage for improved suction performance
- ▶ Permanent & synchronous magnetic drive
  - Maintenance-free
  - Separation of liquid chamber and atmosphere by means of containment shell
- ▶ Pressurized partial flush flow (cooling of eddy current losses / lubrication of journal bearings)
- ▶ Materials: steel, stainless steel, duplex steel, nickel-based materials
- ▶ Bearing bracket with anti-friction bearings, oil-lubricated or greased-for-life
- ▶ Product-lubricated journal bearings; made of silicon carbide (SSiC) or customized materials
- ▶ Rub zones as per standard for increased safety
- ▶ Close-coupled design (SLM SVB)

## PUMPING OF

- ▶ Acids
- ▶ Aggressive, explosive, toxic, hot and malodorous liquids
- ▶ Coolants
- ▶ Hydrocarbons
- ▶ Liquid gases
- ▶ Lyes
- ▶ Refrigerants
- ▶ Sea water
- ▶ Solvents
- ▶ Valuable liquids
- ▶ And many more

MANY  
OPTIONS  
AVAILABLE

